

# MUSIC STUDENT AT A CONSERVATOIRE OR COLLEGE?

Join a research study investigating musicians' varying physical and technical struggles and injuries

Questions on technique, experiences, pain maps, injuries, and more

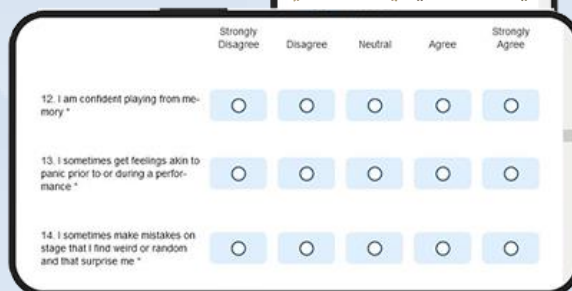
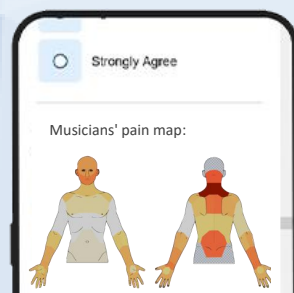
Make a valuable contribution to research and make your unique experiences represented

Take an anonymised online survey

Win **1000kr (€90/\$95) giftcards**

(ongoing lotteries, winners can pick any online store)

Scan to start the survey!



More info on next page

Ioannis Theodoridis  
PhD Research Fellow  
Norwegian Academy of Music  
[ioannis.theodoridis@nmh.no](mailto:ioannis.theodoridis@nmh.no)



Norges musikkhøgskole  
Norwegian Academy of Music

CERM

Centre for Educational Research in Music

# Join the survey!

Questions on technique, experiences, pain maps, injuries, and more



Scan to start

- Even world class musicians vary widely in how difficult they find it to physically play or sing
- Some musicians and instrument groups struggle much more than others
  - Many have chronic pains and/or injuries
  - Institutions need to better understand these challenges to best support their students

We are investigating various factors that can influence musicians' abilities to physically play as well as they would like, and how these factors relate to common injuries and other performance struggles

### Eligibility:

College-level music students of all instruments, genres, & study programmes

### Prize-draw:

The gift card prize-draws are continuous: optional follow-up surveys include new prize-draws

**Deadline for this round: 18<sup>th</sup> Dec 2024**

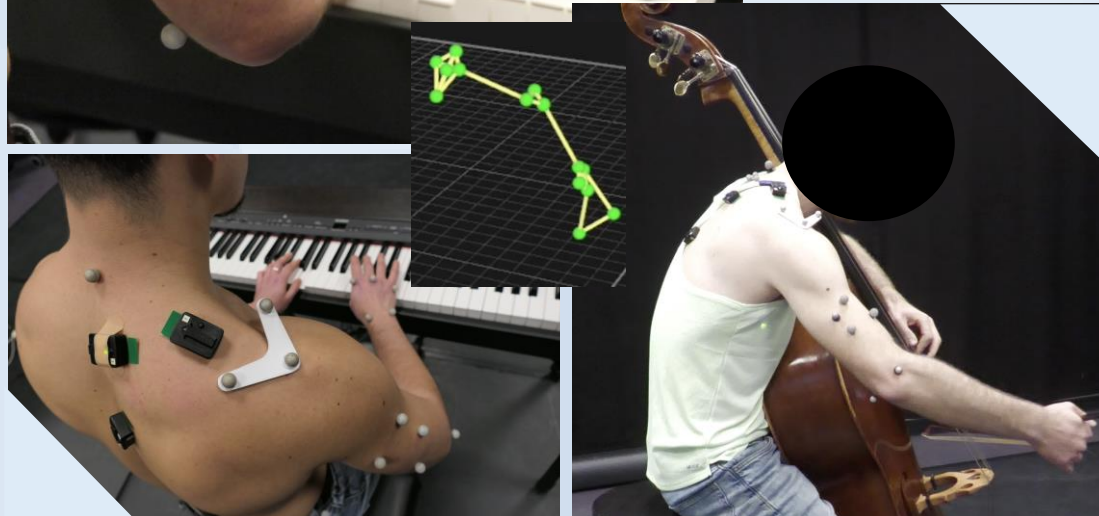


3D motion-capture and muscle readings

### Separate studies in this project: Biomechanical research

(optional for survey participants near lab facilities in Oslo/Southampton)

### Teacher interviews



### Get in touch!

Ioannis Theodoridis  
PhD Research Fellow at the  
Norwegian Academy of Music  
[ioannis.theodoridis@nmh.no](mailto:ioannis.theodoridis@nmh.no)



Norges musikkhøgskole  
Norwegian Academy of Music

CERM

Centre for Educational Research in Music